

1

2

3

4

5

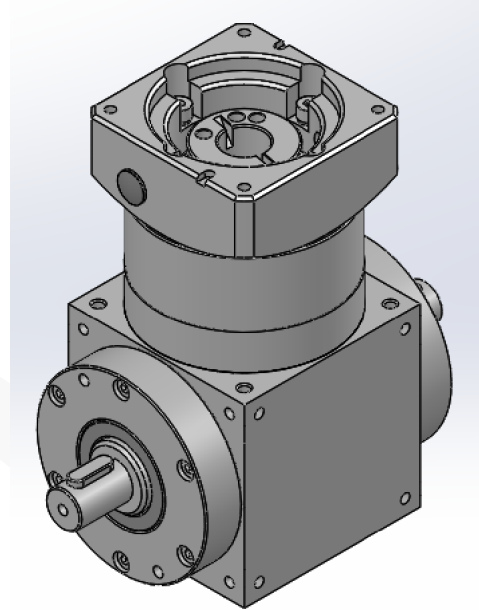
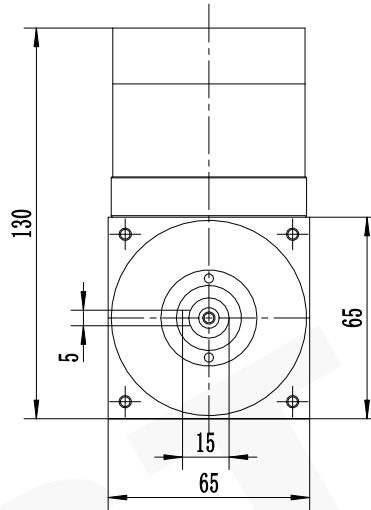
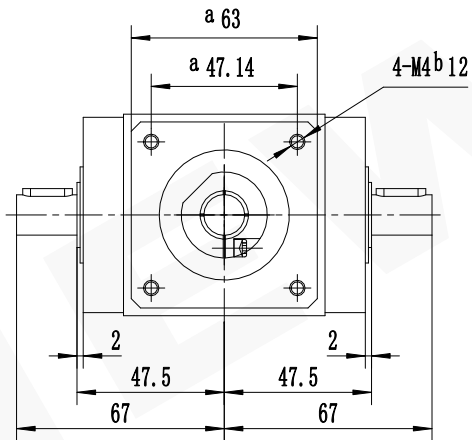
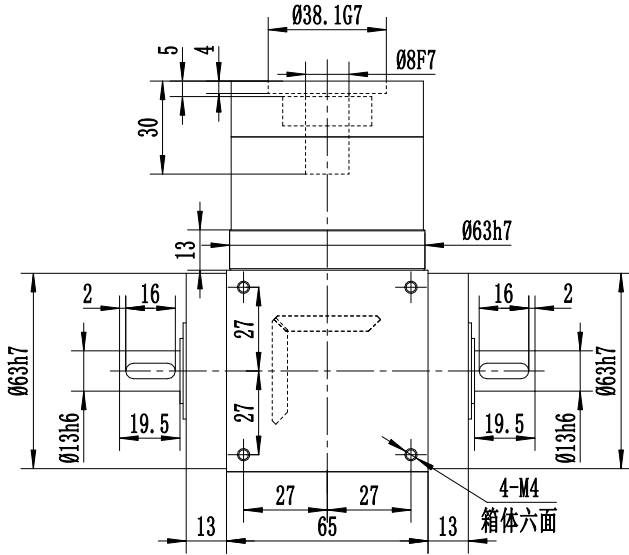
6

A

B

C

D



A

B

C

D

减速比 (Ratio i)		1	2						
额定承载扭矩 (Rated load torque)	Nm	25	24						
最大加速力矩 (Max. acceleration torque)	Nm	38	36						
急停扭矩 (Emergency stop torque)	Nm	75	72						

精密行星减速机技术参数				精密行星减速机			
容许最大径向载荷 (Max. radial load)	700N	空载力矩20℃ (No-load torque)	≤ 0.1Nm	 PW65L1-i-S2-8-25-38.1-□47.14-4			
容许最大轴向载荷 (Max. axial load)	350N	润滑 (Lubrication)	合成润滑油 (Synthetic grease)				
额定输入转速 (Nominal input speed)	3000r/min	使用环境温度 (Operation temperature)	-15℃~+90℃	A. PW. 065.			
最大输入转速 (Max input speed)	6000r/min	使用寿命 (Service life)	≥20000h				
噪音 (Noise)	≤ 60db	防护等级 (Protection grade)	IP54	A. PW. 065.			
回程间隙 (Backlash)	6arcmin	PW系列	Tel/电话: 0533-6288333 6288444				
		P2 L1	Fax/传真: 0533-6288411				
			Web/网址: www.newstart.cn				

未注线性尺寸极限偏差 Unmarked tolerance	
0.5-3	±0.2
3-6	±0.3
6-30	±0.5
30-120	±0.8
120-400	±1.2
400-1000	±2